

STRATEGIC PLAN (2022-2026)



**Prepared by
YAGYODAYA DUDHNATH THARU MULTIPLE CAMPUS
Suddhodhan-3
Rupandehi**

FOREWORD

Yagyodaya Dudhnath Tharu Campus is non- profitable community campus which is dedicated to service of community through education. The campus is planning to upgrade its programme along with its priority area such as curricular aspect, teaching, learning, infrastructures and learning resources. Therefore, we have formulated strategic planning of five consecutive years to meet the goal of the campus.

The campus team is very committed to implement this very successfully according to rules, regulations and bylaw of UGC.

Thank you.

Tank Prasad Paudel
Campus Chief

Table of Contents

FOREWORD	ii
SECTION 1 : INTRODUCTION.....	1
YAGYODAYA DUDHNATH THARU MULTIPLE CAMPUS: AN OVER VIEW	1
1.1 CONTEXT & RATIONAL.....	1
1.2 PURPOSE OF THE PLAN	1
1.3 PROCESS OF PREPARING THE PLAN	2
1.4 PARTICIPANTS OF STRATEGIC PLANNING	2
1.5 STAKEHOLDERS.....	2
1.6 COMPONENTS OF THE STRATEGIC PLAN	2
1.7 SCOPE OF THE PLAN	3
SECTION 2: INSTITUTIONAL PROFILE	4
2.1 OVERVIEW OF THE CATCHMENT AREA.....	4
2.1.1 GEOGRAPHICAL SETTING	4
2.1.2 SOCIAL, CULTURAL, ECONOMIC & POLITICAL SETTINGS	4
2.1.3 EDUCATIONAL STATUS & SCOPE.....	4
2.1.4 STAKE HOLDERS & SCOPE OF THEIR PARTICIPATION	5
2.2 DESCRIPTIONS OF THE INSTITUTION.....	5
2.2.1 HISTORICAL BACKGROUND	5
2.2.2 PHYSICAL INFRASTRUCTURES	6
2.3 ACADEMIC PROGRAMS AND CURRICULAR MANAGEMENT:	8
2.3.1 PROGRAMS:.....	8
2.3.2 STUDENTS ENROLLMENT & COMPOSITION:	9
2.3.3 CURRICULAR MANAGEMENT & SUPPORT:	9
2.3.4 TEACHING LEARNING MANAGEMENT & PRACTICES:	9
2.3.5 TEACHING LEARNING RESOURCES & SUPPORT:	9
2.3.6 EXAMINATION SYSTEM & RESULTS:	10
2.4 HUMAN RESOURCE MANAGEMENT:.....	10
2.4.1 ADMINISTRATIVE PERSONNELS & STAFF:	10
2.4.2 MANAGEMENT PERSONNEL:	10
2.4.3 FACULTIES:	10
2.5 INSTITUTIONAL MANAGEMENT:	11
2.5.1 INSTITUTIONAL STRUCTURE:	11
2.5.2 BORD OF DIRECTOR.....	12
2.5.3 ADMINISTRATION:	13

2.5.4. ACADEMIC MANAGEMENT:.....	13
2.5.5. ASSOCIATIONS (FACULTIES, STAFF & STUDENTS):	13
2.6 ECONOMIC AND FINANCIAL MANAGEMENT:	13
2.6.1 FIX ASSETS:.....	13
2.6.2 OPERATIONAL EXPENDITURE & TRENDS (Management plus Program):.....	14
2.6.3 SOURCES OF INCOME	14
2.6.4. COST PER STUDENTS:.....	14
2.6.5. FINANCIAL SYSTEM:	15
2.6.6. FINANCIAL SUSTAINABILITY MEASURES ADOPTED:	15
2.7. RESEARCH, DOCUMENTATION & PUBLICATIONS	15
2.7.1. RESEARCH & DEVELOPMENT	15
2.7.2 DOCUMENTATION & PUBLICATION	15
2.8. EXTRA CURRICULAR ACTIVITIE	16
2.8.1. INDOOR ACTIVITIES:	16
2.8.2. OUTDOOR ACTIVITIES:	16
SECTION 3: DEVELOPMENT TREND	17
3.1. PHYSICAL INFRASTRUCTURE DEVELOPMENT	17
3.2. ACADEMIC DEVELOPMENT	17
3.3. STUDENT ENROLLMENT.....	17
3.4. HUMAN RESOURCE DEVELOPMENT	18
3.5. STUDENT- TEACHER RATIO.....	18
3.6. INSTITUTIONAL DEVELOPMENT	18
3.7. ECONOMIC AND FINANCIAL DEVELOPMENT	19
3.8. RESEARCH, DOCUMENTATION AND PUBLICATION.....	19
3.9. EXTRA-CURRICULAR DEVELOPMENT.....	20
SECTION 4: SWOT ANALYSIS of INSTITUTION	21
4.1. STRENGTHS.....	21
4.2. WEAKNESS OR GAPS	21
4.3. OPPORTUNITIES	21
4.4. THREATS/ CHALLENGES.....	22
4.5. BASIS AND CORE PRIORITIES FOR THE INSTITUTIONAL DEVELOPMENT	22
SECTION 5: STRATEGIC PLAN	23
5.1 STRATEGIC PLAN	23
5.1. (a) VISION.....	23
5.1. (b) MISSION.....	23

5.1. (c) GOALS	23
5.2. CORE VALUES & NORMS	24
5.3. STRATEGIES	24
5.4. PROGRAMS	34
5.5. PRIORITIES	35
5.6. IMPLEMENTATION OF PLAN.....	35
5.7. PROVISIONS for MONITORING & EVALUATION.....	35
5.8. ASSUMPTIONS / LIMITATIONS	35
SECTION 6: RESOURCE MOBILIZATION – STAKEHOLDER’S CONCERNS & COMMITMENTS.....	37
6.1. STAKE HOLDERS’ FORUM.....	37
6.2. COMMITMENTS & CONCERNS	37
6.3. NETWORKING.....	37
6.4. SCHEME FOR RESOURCE MOBILIZATION.....	37

SECTION 1 : INTRODUCTION

YAGYODAYA DUDHNATH THARU MULTIPLE CAMPUS: AN OVER VIEW

Yagyodaya Dudhnath Tharu Multiple Campus, situated in Suddhodhan-3 rural is a community-based campus with affiliated to Tribhuvan University. It is completely supported and managed by the community. The College came into existence in 2060 B.S. through the initiative taken by a group of eminent academicians and social activists who recognized the importance of higher education in the development of the community. Being non-profitable community based educational institute, it aims to provide higher education to all sections of students including all casts, scheduled tribes, backward communities and religious minorities with affordable fees.

1.1 CONTEXT & RATIONAL

Every human being want to be civilized person of the society. Such identification is not possible by personal effort. Realizing this universal truth, the community of Suddhodhan Rural Municipality and other Rural Municipalities joined their hands to establish a higher educational institute, and their effort came into existence as Yagyodaya Dudhnath Tharu Multiple Campus. The overall growth of this campus is the dream of the community. So, the people are always with the campus for its prosperity and their participation is viable and real motivating factor.

According to the need of the time, the campus is on phase of bringing upon a drastic change in producing competent human resource that not only compete with other institution but to guide them practically as well.

YDMC, in this context, to provide a modern, relevant and practical education through our varied extra and co-curricular activities, the college has developed the proposed strategic plan. This strategic plan is considered as a roadmap for the college which contributes to inspire the students, motivates the teaching and non-teaching staffs, and mobilizes committees and sub-committees establishing an attachment with the stakeholders.

1.2 PURPOSE OF THE PLAN

After the establishment of the college, it has been on the track of the improvement. This campus is trying to enhance quality and infrastructures of campus based on TU and another global standard.

After the selection of this campus under HERP program of UGC, Strategic Plan Committee of this campus has made a 5 years' strategic plan to uplift the student of the this campus as qualitative campus, the present strategic plan will be the proper guidelines for this institution.

1.3 PROCESS OF PREPARING THE PLAN

YDMC has completed various steps to prepare the strategic plan of the campus. At first, campus Board of Director realized the necessity of the strategic plan of the campus and formulated a strategic planning committee. The campus has consulted various concerned groups like Campus Board of Director (BOD), UGC authorities, local entrepreneurs, faculty members, students and social activists over the plan and developed the mutual understanding among the concerned groups. Finally, the strategic planning committee developed a complete strategic plan of the campus.

1.4 PARTICIPANTS OF STRATEGIC PLANNING

The Strategic Planning Committee has been formed by the Board of Directors of the campus. The representative of the board of director, political parties, faculty members, non-teaching staffs, parents of the students, students and ex- students have active participation in preparation of the strategic plan.

1.5 STAKEHOLDERS

Donors, social activists, political parties, educationalists, faculty members, entrepreneurs, guardians, students, community forestry, ex-students, Rural Municipalities, TU, UGC, Province Government, Federal Government are the stakeholders of the campus. Board of Director of YDMC is formed mostly from the aforementioned groups.

1.6 COMPONENTS OF THE STRATEGIC PLAN

The components of the strategic plan are the mission, vision, goals, priorities, measures and target of the campus. These are based on recurrent annual budget, past experiences, guidelines of TU and UGC. This plan includes present physical and academic condition and predicts the scenario of campus with the completion of 2026.

1.7 SCOPE OF THE PLAN

This plan aims to achieve optimal utilization of resources within a challenging educational environment, to meet the needs of college and fulfil the stakeholder's expectation. With overall development of the campus as per the scope of the plan.it is the formal display of the campus with the effective implementation to represent the campus in the data and the documented file.

SECTION 2: INSTITUTIONAL PROFILE

2.1 OVERVIEW OF THE CATCHMENT AREA

YDTMC has been operating its academic programs with the enrolled students from Suddhodhan Rural Municipality, neighboring Rural Municipalities, Siyari, Mayadevi, Gaidahawa, Butwal Sub metropolitan city, etc. Students have been from Rupandehi as well as neighboring districts Palpa, Gulmi, Nawalparasi, Kapilvastu, Arghakhanchi, Syangja, Parbat, Baglung and so on.

2.1.1 GEOGRAPHICAL SETTING

YDTMC is located in Suddhodhan Rural Municipalities - 3 in Rupandehi District of Lumbini province. YDMC is located near about middle part of the rivers Tinau and Danav in Rupandehi district. Rupandehi is in the middle of three districts (Palpa, Nawalparasi and Kapilvastu) of Lumbini province. Lumbini, birthplace of Gautam Buddha is near about 32 Kilometer south-west from the campus. Most of the people of this area are involved in agricultural task, some of trade firms and factories have been run by local inhabitants of this catchment area.

2.1.2 SOCIAL, CULTURAL, ECONOMIC & POLITICAL SETTINGS

Suddhodhan Rural Municipalities where the campus situated is full of cultural heterogeneity. The indigenous people of this area and migrated population has formed mutual understanding, brotherhood and religious tolerance in this community. Most of the migrated people are from hilly districts like Palpa, Syangja, Gulmi, Arghakhanchi. The residents of this area are Brahamin, Tharu, Gurung, Magar, Bishwakarma, Newar, Madhesi and so on. The diverse of residents above has also diverse in economic condition and their lifestyle. Agriculture is the main occupation of the most of the people and some are involved in service, business, foreign employment and self-reliant activities. YDMC is an open door for the students from every class of the existing community.

2.1.3 EDUCATIONAL STATUS & SCOPE

YDMC has its own identity in the crowd of various academia of this area. It is an amalgam of excellent teaching staffs, sound infrastructure and environment, energetic administrative body and curious students for learning. Besides, campus is under practice to update the faculty members in research and trainings. The production of the campus is involved in various sectors and they are

renowned in their respective field which is the pride of the institution. The campus has been successful to achieve its target as displayed by the data and record.

2.1.4 STAKE HOLDERS & SCOPE OF THEIR PARTICIPATION

Social workers, Donors, Educationalists, life time members, Rural Municipalities, Community forestry, cooperatives, guardians, Industrialists, NGOs, Banks, teachers/staffs, entrepreneurs, and students are the stakeholders of this institution. Board of Director and other sub-committees are formed within that circle. They involve themselves voluntarily in campus activities for its overall development.

2.2 DESCRIPTIONS OF THE INSTITUTION

2.2.1 HISTORICAL BACKGROUND

Yagyodaya Dudhnath Tharu Multiple Campus is a community-based campus affiliated to Tribhuvan University. Hence, it is completely supported and managed by the community. The College came into existence in 2060 through the initiative taken by a group of eminent academicians and social activists who recognized the importance of higher education in the development of the community. They also realized that it was very difficult and often impossible for the poor residents of Sau. Pharsatikar and nearby areas to attend college in Butwal Multiple Campus and Bhairahawa Multiple Campus because of various problems such as the greater costs involved in studying outside one's hometown. Like all other good initiatives, this effort also experienced various ups and downs. It had a humble beginning with just some rooms of Shree Pharsatikar Secondary School, Sau. Pharsatikar-1, with a total number of 32 students and offered bachelor courses in Humanities and Education. To run this college, the Board of Director and social activists conducted MAHAYAGYA which had been a good initiation to the establishment of college. In 2064, after being constructed its own buildings, it was shifted from Shree Pharsatikar Secondary School's building to its present premises. In addition, to the Humanities and Social Science faculty, the Education faculty and the Management faculty were established in 2061 and 2063 respectively. Realizing the value of education, the campus started its master's degree in management from 2070 by reconducting MAHAYAGYA in 2069. The College has been renamed from Pharsatikar Yagyodaya Multiple Campus to Yagyodaya Dudhnath Tharu Multiple Campus after being donated 02-00-00 Bigaha land by Dudhnath Tharu, a local social worker. YDTMC was formally inaugurated by the late prime-minister Susil Koirala on 2nd Fagun

2070. Being a non-profit community based educational institution; it is always committed to educate the aspiring students at the affordable rate of fee. The campus Board of Director, the academic council, the administration, the teaching and non- teaching staffs, and the students, all are cooperative in the matter of campus development through quality enhancement. Several internal and external donors and agencies have provided financial assistance to develop physical infrastructures of the campus. Qualified, skilled and efficient manpower have been contributing a lot to quality enhancement. Being the community based educational institute, it has been competing with many private colleges and always trying to provide quality education for many years.

2.2.2 PHYSICAL INFRASTRUCTURES

2.2.2.1 BUILDINGS & ROOMS

YDMC has its own two-storied building to run the college. There is a separate building for library purposes. A separate administrative building is under construction for the administrative purposes of the campus. Apart from this, there is a separate student union building, gatekeeper building, canteen building, and motorcycle scooter cycle stand. The parking area is becoming narrower day by day, although there is enough land for this, it needs to be managed in a proper manner. The campus has created its master plan for physical development and will continue to plan physical development accordingly. As there is an open space outside the campus, it is necessary to construct a concrete wall to protect it.

2.2.2.2 FURNITURE & ACCESSORIES

YDMC possesses different types of furniture as it requires. It has been able to manage the necessary furniture like desks, benches, table, chairs, sofa, cupboard, rostrum etc. in classrooms and offices as well. The campus has 131 (Metal 47, Plastic 63 and wooden 21) chairs and revolving chair 6, 58 tables (Computer table 41 and wooden table 17), 155 desks and 188 benches (metal), fiber desks 59 and benches 58 , 4 sofas, 13 cupboards, 6 racks, 6 tools, 20 rostrums, ceiling fan 67, stand fan 2, Projector 6, printer 4, photocopier 1, desktop computer 26 and 1 wheel chair for the office and classroom purpose.

2.2.2.3 DRINKING WATER

Pharsatikar drinking water supply and sanitation system is providing drinking water for the college. Besides, Campus has install 2 modern filtration drinking water system to the students supported by the University Grants Commission, Sanothimi, Bhaktapur.

2.2.2.4 TOILET FACILITIES

YDMC consists of two toilets for the teacher-staffs and the students. A separate block has been constructed for toilet purpose and another toilet is attached in the second floor of the building. Both boys and girls can use the toilet separately. Newly constructed building has enough space for toilet for students and teachers with modern accessories. The campus has managed well sanitary system.

2.2.2.5 HOSTEL FACILITY

YDMC has realized the necessity of a hostel at the campus. it is trying to broaden it catchment area. Similarly, campus management committee has plan to add new subject program. It will be constructed well facilitated hostel building which has mentioned in master plan as per identifying the demand of the students.

2.2.2.6 SPORTS FACILITY

There is open space field in the northern side of the college. The campus has been able to use some parts of the field as the playground of the college where a badminton court has been constructed. The badminton court is being used for other outdoor games also. To provide table tennis facilities a room has provided and students get benefited table tennis games. Although there is enough space for sports activities but the financial scarcity the campus has not able to managed a well facilitated playground for outdoor games. The basketball court and well managed playground has planned in campus master plan. After identified the financial resource campus will construct well facilitated play ground with basketball court and football court.

2.2.2.7 ROADS & TRANSPORTATION FACILITIES

YDMC is 1 kilometer far from the Pharsatikar Bazar. It is not easily accessible for every student from every part of its catchment area. A blacktopped road to the college from the Bazar makes easy access for some local students. but most of the students from the rural area has a problem to attend the class

on time by bicycle travel because of the graveled road in the rural area. Som of students comes Farsatikar bazar by micro bus and they comes campus by foot. To address the transportation problems of the student's campus had plan to operate campus buses for the students.

In this year, campus has got campus bus from Indian embassy. It will solve the some of the transportation problems of the students. It will help to identify the transportation needed students. Campus has plan to add next bus as per the demand to the needed student.

2.2.2.8 LIBRARY

YDMC consists of a library for the students. It is available for the students and staffs for textual and referential purpose. It has been able to manage the books of Education, Management and Humanities faculties. There are about 2426 books related to education faculty and 1618 books related to management faculty. Besides, some journals, other related books, daily and weekly newspapers are reachable to the campus students. Now, the campus has just managed a new library building with a plan to manage the new building with having being well facilitated with internet access which aims to be useful for college teachers, students and researchers.

2.2.2.9 LABORATORY

A computer lab with internet access has been established in the campus. B.Ed. fourth year students studying ICT in Education subject and they have been using computer lab. it has been used according to the interest of other students as well. Similarly, students have easy access to computers in the library from where they can access information, education and study materials.

The campus has planned to conduct technical subjects like hotel management, public health, social work at the graduate level. For this, it is planned to build the necessary laboratory classrooms after obtaining permission.

2.3 ACADEMIC PROGRAMS AND CURRICULAR MANAGEMENT:

2.3.1 PROGRAMS:

YDMC is at present running Bachelor level B.B.S. and B.Ed. programs and Master level M.B.S. program affiliating to T.U. YDMC conducts annual, half yearly and monthly extracurricular activities according to the calendar published by the campus. Furthermore, campus is keen interested to launch

new academic programs related to modern curriculum and technical field i.e. B.B.A (Bachelor of Business Administration, BHM (Bachelor of Hotel Management) B.B.M.(Bachelor of Business Management) BHM (Bachelor of Hotel Management), BPH (Bachelor in Public Health) and BSW (Bachelor of Social Work)

2.3.2 STUDENTS ENROLLMENT & COMPOSITION:

YDMC has the trend of co-education of which the number of females is more than male. Students from different rural municipalities of home district Rupandehi and neighboring district are enrolled here for higher level study. Campus has altogether 726 students in Bachelor and Master level programs which are affiliated to T.U.

2.3.3 CURRICULAR MANAGEMENT & SUPPORT:

Faculties of campus have prepared a year wise plan which being implemented for curricular and management support. Counseling for new students, career-oriented programs for last year students, periodical extracurricular activities, competitions have been going on according to operational calendar.

2.3.4 TEACHING LEARNING MANAGEMENT & PRACTICES:

YDMC has been providing various types of seminars, workshops and has been encouraging teachers to take part in national level seminars organized by T.U, University Grants Commission, neighboring colleges or other agencies in order to improve the academic quality. Faculties of YDMC are being involved in the above-mentioned events, activities and finding appropriate resources to strengthen teaching learning practices.

2.3.5 TEACHING LEARNING RESOURCES & SUPPORT:

YDMC is able to manage a library consisting of reference books, text books, some research journals, newspapers, magazines, internet service and so on with the support from various sectors. The campus has been updated the library with E-library facilities. Moreover, the campus is trying to manage all necessary teaching and learning resources. Different government higher secondary schools and private colleges are also supporting the campus.

2.3.6 EXAMINATION SYSTEM & RESULTS:

YDMC examination committee has been conducting effective internal examination at least twice in a year that enable students to face their final examination. The committee has a policy of fine system to absent students. The candidates who are not appeared in internal exam are penalized by small amount of fine that fosters students to attend in internal exam.

2.4 HUMAN RESOURCE MANAGEMENT:

2.4.1 ADMINISTRATIVE PERSONNELS & STAFF:

YDMC is an educational institution with efficient manpower. The manpower needed for the campus is selected by free competition. The Board of Director coordinating with the campus chief has a leading role in appointing new staffs for the campus. Asst. campus chief, head of the faculties are also selected from the fulltime teachers. Other administrative staffs are selected from the free competition publicly announcing the vacancies in newspaper, Facebook page (<https://www.facebook.com/YDTMC/> and <https://www.facebook.com/ydmcpiec>) of the campus and by the Board of Director.

2.4.2 MANAGEMENT PERSONNEL:

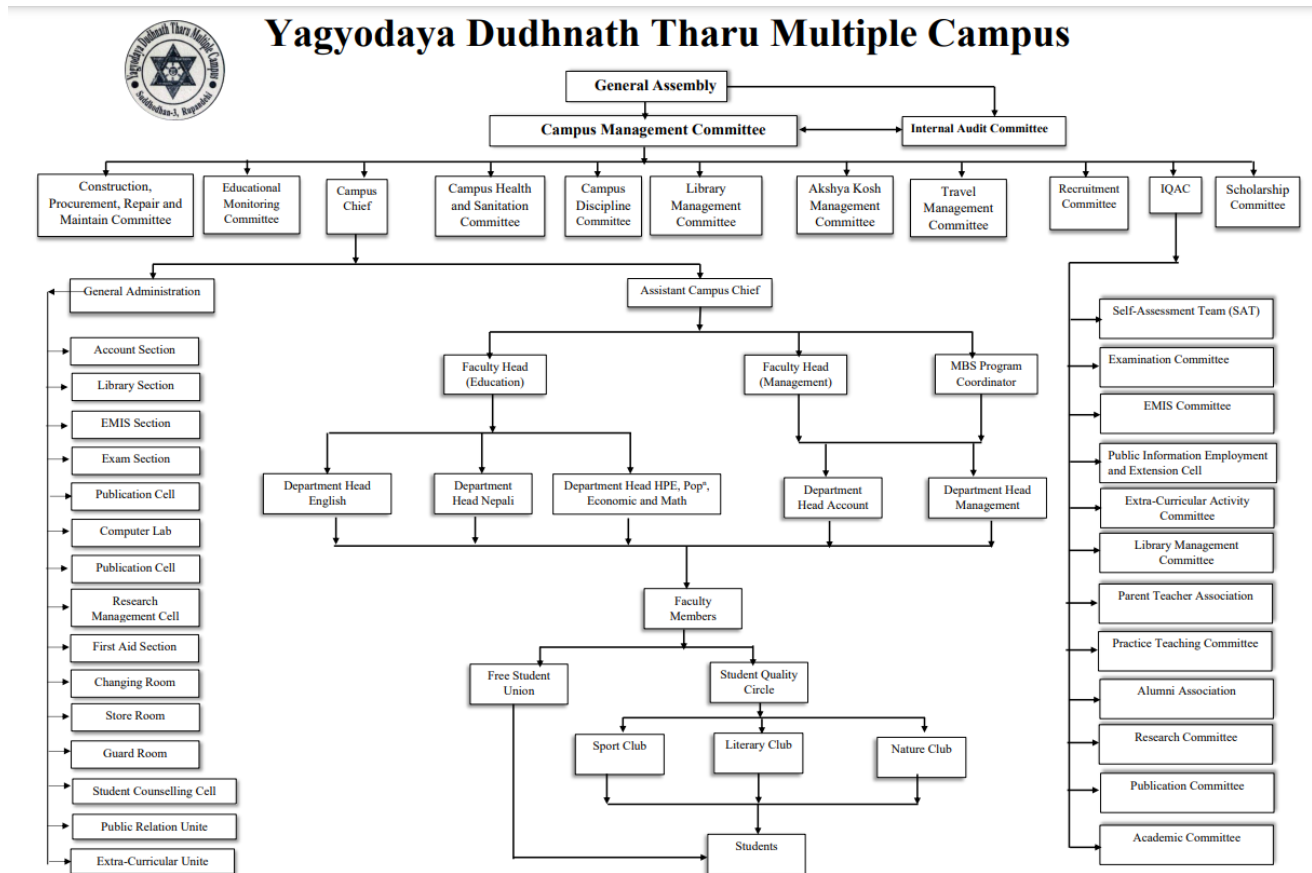
The selection of the chairperson of campus Board of Director is based on TU acts on the recommendation of campus general assembly. However, the Board of Director body is formed with understanding of the other stakeholders.

2.4.3 FACULTIES:

Selection of the faculty members is done on the basis of the staff selection rules and procedures. Besides this, the participants' competence and performance on the related subjects play the crucial role on their selection. Teaching staffs are grouped according to the faculties under the faculty head and department head.

2.5 INSTITUTIONAL MANAGEMENT:

2.5.1 INSTITUTIONAL STRUCTURE:



2.5.2 BORD OF DIRECTOR

YDTMC Board of Director is a body formed under the act of T.U. and campus itself. The formation of campus Board of Director is completed as mentioned above in 2.4.2. Mr. Ramesh Khanal is the President of campus Board of Director. Board of Director of YDTMC is as follow:

1. Mr. Ramesh Khanal - President
2. Mr.Nawalraj Sharma (Bhattarai) - Vice President
3. Mr. Romakanta Aadhikari - Treasurer
4. Ms. Dudhnath Tharu - Life time member
5. Mr. Bhabeshor Khanal - Life time member
6. Mr. Tejendra Khadka - Life time member
7. Mr. Keshav Prasad Aadhikari - Member
8. Mr. Bijaya Bikram Tandan - Member
9. Mr. Nir Bahadur Rana - Member
10. Mr. Ram Prasad Panday - Member
11. Mr. Dahan Raj Kandel (D.R.) - Member
12. Mr. Paltan Chaudhary - Member
13. Mr. Prem Narayan Sharma (Khanal) - Member
14. Mr. Rishi Ram Pathak - Member
15. Mr. Baburam Kharel - Member
16. Mr. Arjun Kumar Thapa chhetri - Member
17. Mr. Nanda Bahadur Chhetri - Member
18. Mr. Poshraj Khanal(Mahesh) - Member
19. Mr. Bhaktiram Sapkota - Member
20. Mr. Cap. Prem Bahadur Thapa kunwar - Member

- | | |
|-----------------------------------|-------------------------------------|
| 21. Mrs. Shova Kumari Aale | - Member |
| 22. Mr. Hem Bahadur Khadka | - Member (Ward No.-3 President) |
| 23. Mr. Yam Prasad Sharma (Wagle) | - Member (TU Representative) |
| 24. Mr. Laxmi Aacharya | - Member (Professor Representative) |
| 25. Mr. Tanka Prasad Paudel | - Member Secretary (Campus Chief) |

2.5.3 ADMINISTRATION:

YDMC has managed the campus chief to lead the campus system in effectively and systematically. Under the recommendations of the campus chief, assistant campus chief is appointed as above mentioned in 2.4.1. To regulate the faculties or programs; head of the faculties and coordinators of programs are appointed. On the other hand, administrative officer and account officer are leading the non-teaching staff for administrative purpose.

2.5.4. ACADEMIC MANAGEMENT:

The campus chief has a prime role for academic management. Moreover, Assistant campus chief, the head of the department (faculty) and class in-charges are working for the academic management in the co-ordination.

2.5.5. ASSOCIATIONS (FACULTIES, STAFF & STUDENTS):

Various committees and groups have been formed to improve the academic quality of the campus. Such as Internal Quality Improvement Committee, Research Management Committee, Academic Committee, Extracurricular Activities Committee, Student Counseling Employment Committee, Student Quality Improvement Committee, and so on. Similarly, for the professional rights of professors, there is a professor organization and a student organization for the students.

2.6 ECONOMIC AND FINANCIAL MANAGEMENT:

2.6.1 FIX ASSETS:

Campus has its own property of 02-06-06 land in periphery of the campus building. It has also got 03-00-00 as donated by Suddhodhan-5 (Manpakadi VDC-8) for a purpose to run technical subject where a building with 5 rooms has already been completed along with a toilet. The whole property

(Fixed assets) of the campus has been valued worth Rs. 6, 23, 40,095.53 (*audit report, 2077/78*). Besides, YDMC has deposited of 48, 33,803.93(*audit report, 2077/78*) rupees in different banks.

2.6.2 OPERATIONAL EXPENDITURE & TRENDS (Management plus Program):

The student number in the campus is growing day by day and the ratio of the operational expenditure is increasing. The areas in which the campus has expense are on stationary, repair and maintenance, advertisement and newspaper, phone, water supply, internal examination, training, programs for the students and so on and the campus is managing the expense from internal and external resources.

2.6.3 SOURCES OF INCOME

REGULAR SOURCES (INTERNAL & EXTERNAL)

YDMC's source of internal regular income is fee collection from students. The campus has no other internal sources of income. The campus has taken the support provided by the University Grants Commission in the form of grants every year as a source of regular external income. Apart from this, from time to time, the University Grants Commission has also provided resources for the purchase of physical materials and construction of buildings. For the construction of the physical infrastructure of the campus, apart from the University Grants Commission, other sources of external funding have been taken from the local government, state government and sometimes the federal government as external sources.

GRANTS SOUGHT

YDTMC is seeking regular grants for sustainable and multidisciplinary development of the campus including its physical infrastructure. To develop the physical, technical and academic quality of the campus requires regular grants for some years. For this, the campus management committee is committed to the goal of identifying resources and developing them sustainably.

2.6.4. COST PER STUDENTS:

Unit cost total annual expenditure budget (i.e. actual) divided by the number of students enrolled is Rs. 20,750.37. And unit cost calculated excluding salary component is Rs.7286.14.

2.6.5. FINANCIAL SYSTEM:

YDMC has the system of keeping its all financial records and income expenditures as per the TU act. Including record keeping, accounting, auditing, inventory and updating are on the systems of campus. All the above mentioned activities have been operating under the financial rules & regulations. Besides this, campus has internal audit team.

2.6.6. FINANCIAL SUSTAINABILITY MEASURES ADOPTED:

Although the campus has been facing the economic crisis for the sustainability, it has an effort to seek economy or proper resources for the sustainability development. Campus is also on the process of QAA as well which the main objective of the campus is.

2.7. RESEARCH, DOCUMENTATION & PUBLICATIONS

2.7.1. RESEARCH & DEVELOPMENT

During the successful operation of Bachelor and Masters' programmes, YDMC has experienced the importance of research in quality-based teaching and learning activities. In order to conduct research, a Research Management Committee (RMC) has been formed in campus. This committee has already started different research-based activities such as Research Methodology Training, Qualitative and Quantitative Data Analysis Training in collaboration with University Grand Commission (UGC). Similarly, it has been providing the campus students different orientation programmes on filed based activities like Community Survey, Mini Research and Project Meet which help the students conduct internal research-based activities. RMC has been able to encourage and strengthen capacity of faculties and students towards research-based activities. Moreover, YDMC has been sending its faculty members to participate in different research methodology training and workshops organized by neighbouring institutions. YDMC has allocated funds for research-based activities in its Master Plan (2022-2027 A.D.) and has further plans to conduct different mini research with the help of its faculties.

2.7.2 DOCUMENTATION & PUBLICATION

YDMC has been publishing brochures, pamphlets and academic calendars. On the other hand, EMIS cell is going to publish EMIS report periodically.

In addition, YDMC has recorded all the necessary information and records items for institutional purpose in ledgers and registers. Records of the students has been recorded in various books and ledgers and prepared in computer as well. Digital technology for the recording data is being practiced and going to implement this system in overall activities.

2.8. EXTRA CURRICULAR ACTIVITIES

2.8.1. INDOOR ACTIVITIES:

- i) Co-curricular activities
- ii) B.Ed. Orientation Program (Report Writing)
 - a) Lesson plan orientation
 - b) Case study orientation
 - c) Community survey report writing orientation
 - d) Teaching Practice Orientation
 - e) Report writing orientation, etc.
 - f) Teaching License Orientation
 - g) Thesis orientation
- iii) Writing contest
- iv) Seminar on "Social Research".
- v) Debate contest
- vi) Speech contest
- vi) Quiz contest

2.8.2. OUTDOOR ACTIVITIES:

- i) Volleyball competition i.e. campus & district level
- ii) Table Tennis
- iii) Badminton
- ii) Cricket competition

SECTION 3: DEVELOPMENT TREND

YD MC is a non-profit community based campus which aims to provide a quality education in the local level. As mentioned above in the introduction section of the campus, the local community, social donors, educationalists, and many others have offered their valuable contribution for uplifting the campus.

3.1. PHYSICAL INFRASTRUCTURE DEVELOPMENT

The available buildings in YDMC have been built in different period and time using the financial supports from different sectors. The three-storied building is the main building of the campus comprising two blocks (Bhabeswor Shikchya Sadan and Tejendra Byawasthapan Sadan) which was constructed with Mahayegya budget along with the financial support from local level government, DDC, State government, Central government, local entrepreneurs and local donors. Sometime the grant are available from UGC. Separate library block and administration building has been constructed with support by mention above. The campus is still in need of more rooms and building to be added in the campus premises which has not been achieved yet due to financial problems.

3.2. ACADEMIC DEVELOPMENT

The main aim of YDMC is to develop academic excellence in the feeder area. On the initiation and the support of the community, the campus was established with humanities and social science, education faculty and management faculty. In the same way, M.B.S. program has also been launched as per the demand of the locality.

Besides, new subjects of B.B.A., B.H.M., B.B.M., B.H.M., B.P.H., and B.S.W. have been planned with the participation of the community. YDMC is looking for long-term resources to start those educational programs.

3.3. STUDENT ENROLLMENT

YDMC is in the heart of rural area. Including Rupandehi, many students from different districts like Kapilvastu, Palpa, Gulmi, Syangja, Arghakhanchi, Parbat, Baglung, and so on are being the family of the campus. The campus is trying to increase the number of students every year motivating them and applying different policies. Besides, we are well known that students are keen to enroll on new

programs and new methodology of teaching. The campus has a plan to have more than 1200 students during 5 years.

3.4. HUMAN RESOURCE DEVELOPMENT

Quality of higher education depends largely on the quality of human resource particularly quality of academic staff and managerial skills of the administrative staff for managing support services required for quality higher education. For the human resource development, the campus has new strategies to develop the performance of faculty members. Various programme like orientation, training, motivation in research development for teachers and students are the key strategies of the campus. Now, YDMC is planning to organize more seminars, workshops and participating teachers on the national level programs. The campus has a plan to provide the facilities, perks and benefits to those faculty members and administrative staff who want to develop their career continuing their study.

Similarly, there is a plan to advance the promotion of teaching professors by giving priority to the level increase. The campus management committee has planned to promote the professors and staff every year.

3.5. STUDENT- TEACHER RATIO

The student-teacher ratio is 20:1s. This ratio seems to be a support for quality education but we are facing financial challenge on sustainability.

3.6. INSTITUTIONAL DEVELOPMENT

Being a non-profitable educational institution, YDMC is being developed gradually with the help of its stakeholders, teaching and non-teaching staffs, parents, students, and reliable financial resource. The Board of Director is playing an effective role with proper co-ordination according to the institution's rules and regulation for the overall institutional development. It consists of various committees, sub committees and sections that are working in coordination with each other. The policies and strategies developed by the board of director are followed according to the norms of the institution.

Though donation of Mahayagya has been fundamental source of the campus, yet it needs other effective financial sources from the government and UGC to run the campus smoothly along with meeting the proposed target.

3.7. ECONOMIC AND FINANCIAL DEVELOPMENT

The fee of the students is the main financial source of the college. Being a community-based college, YDMC is teaching the students at a lower fee. Along with the fee, the campus uses different donations, and grants by UGC, Some are supported budgets by Local, State, and central governments as economic sources but these are not enough to maintain the economic condition of the campus. So, the campus should plan to collect extra sources and some handsome grants for its overall development.

3.8. RESEARCH, DOCUMENTATION AND PUBLICATION

During the implementation of B.A., B. Ed, B.B.S., M.B.S program, the YDMC be aware of the significance of research for the qualitative teaching learning practices. After realizing the importance of research, YDMC has formulated Research Committee to synchronize different stakeholder towards research. Hence, the Research committee has conducted research methodology training to motivate faculty members toward research. In the same way, campus has conducted research methodology orientation to the students to build capacity of survey and research, and successfully coordinated with local NGO for their further research opportunities. In addition, YDMC has been sending various faculty members to the research methodology trainings organized by neighboring institutions.

YDMC has been publishing brochures, pamphlets and academic calendars. On the other hand, EMIS cell is going to publish EMIS report periodically. Likewise, YDMC has recorded all the necessary information and records items for institutional purpose in ledgers and registers. Campus has well managed its regulation act (bylaw) i.e. “Bidhan” an act with concentration to the Tribhuvan University’s rules and regulations. It has also preserved all the minutes of campus Board of Director meetings and decisions. Campus has records of annual audit reports, teaching and non-teaching staff appointment and promotions. The records of enrolled students from the establishment of campus, books entered in library, furniture, devices of campus are safe at campus.

Besides, campus has been publishing brochures, pamphlets, banners and flashboards for the right information to new-comer students.

3.9. EXTRA-CURRICULAR DEVELOPMENT

YDMC is conducting some indoor and outdoor extra-curricular activities to develop overall performance of the students. Though the college has not its good play ground for the students, it encourages and motivates the students to take part in some extra-curricular activities every year. Students' participation in some college programme and programmes organized by other institutions is satisfactory. Now, the campus has already formed an extra-curricular committee for extra-curricular development.

SECTION 4: SWOT ANALYSIS of INSTITUTION

4.1. STRENGTHS

YDMC has owned sufficient land donated by social worker which is a great foundation for infrastructure development. On the other hand, the campus has been supported by more than 12 hundred life members, cared, regulated and nourished by community. Likewise, the campus has owned big academic building, wider playground and pollution free educational environment for running programs. In addition, the campus has been supported by the members of legislative assembly.

4.2. WEAKNESS OR GAPS

At YDMC students are generally from underprivileged class and background. Henceforth, they are unable to meet their educational expenses needed for their overall development. On the other hand, the campus is also not able to provide them with sufficient educational material as compared to other private college in the feeder area.

YDMC needs to implement multimedia system in teaching learning activity; although multimedia teaching learning practices is in beginning phase. In addition, YDMC is unable to provide the government scale salary for teaching and non-teaching staffs which is needed for motivating them due to financial problem. Likewise, campus is facing challenge to attract faculty members towards research activities along with lack of attraction of Ph.D. scholars towards the campus.

4.3. OPPORTUNITIES

There are many opportunities at YDMC in the sector of academic and quality development. UGC's schemes, local governments agencies' supports, community's supports are the important opportunities for this institution. Campus itself is trying to achieve those opportunities but the above mentioned economic-financial factors are not supporting for the achievement of opportunities. On the other hand, many stakeholders, like Members of parliament from catchment area, local business entrepreneurs, educationalist, social workers and the local people have been contributing on the promotion of the campus.

Likewise, feeder institutions of the catchment area have been running successfully with every year increasing the number of students through migration especially from neighboring districts. So, the campus prospects are highly achievable.

In addition, in the catchment area, running of B.Sc., B.B.A., B.H.M., B.B.M., B.P.H., and B.S.W. is likely to be welcomed due to no availability of such programs. Such technical and proposed programs could make YDMC leading institutions in the catchment area.

4.4. THREATS/ CHALLENGES

YDMC has to face many challenges/ threats from the private sectors' campuses and institutions as they have different type persuasions to enroll the students in their colleges/ campuses.

- a) Establishment of private colleges in its catchment area.
- b) Increasing the trend of foreign employment by quitting the studies.
- c) Migration to neighboring district through marriages.
- d) Unstable political situation.

4.5. BASIS AND CORE PRIORITIES FOR THE INSTITUTIONAL DEVELOPMENT

YDMC aims the core priorities on e-library management, implementation of different use of multimedia with lots of research finally leading the campus uplifted in quality. It has clear aim of setting up computer lab, research center, seminar hall, well and technically facilitated classroom along with ladies' friendly toilet.

SECTION 5: STRATEGIC PLAN

5.1 STRATEGIC PLAN

5.1. (a) VISION

Yagyodaya Dudhnath Tharu Multiple campus aspires to be a premier higher educational institute to improve people's lives through learning.

5.1. (b) MISSION

Yagyodaya Dudhnath Tharu Multiple College is committed to the intellectual, personal and professional growth of its students, faculty and staffs. The college is dedicated to excellence in teaching, research activities, creative activities, scholarship, and public engagement creating high-quality learning opportunities to all sections of students with affordable fee.

5.1. (c) GOALS

YDMC has its goals to be accomplished the vision of the college through strategic plan. The goal of the five-year strategic plan will be:

- To achieve the institution's vision and mission through its action plans and relevant activities.
- To achieve competitive, qualitative and global standard human resources by attracting the merit students.
- To inspire a lifelong passion for learning, and to empower the students to succeed as citizens of a challenging world.
- To qualify for quality assurance accreditation from University Grand Commission.
- To prepare students for leadership and lifelong learning in a multicultural world.
- To enhance the excellence in research development.
- To improve student-centered learning with modern technology and courses in and out of the classroom
- To produce many skillful manpower as the nation requires.
- To Strengthen co-curricular programs that support experiential learning and student success.
- To Engage the respective stakeholders and the community for the betterment of college.
- To Increase professional development coordinating with world famous universities.

- To Secure additional funding for infrastructure.
- To enhance college's positive image with all stakeholders.

5.2. CORE VALUES & NORMS

YMC is a community based campus established under TU provision as per the demand of local people. It aims to provide access to quality higher education to all sections of students including all casts, scheduled tribes, backward communities and religious minorities with affordable fees which is the value and norms of the college.

5.3. STRATEGIES

Based on University Grants Commission, YDMC has prepared a strategic plan of the campus on academic, physical, and technical sectors. The strategies and plans of the college is displayed and narrated with the action plan as follows:

PERFORMANCE GRANT (BUDGET/ ACTION PLAN): (2022-2026)

S. N.	Activities	Expenditure	Work in the years				
			I	II	III	IV	V
1.	Books Purchasing	2,000,000.00	√	√	√	√	√
2.	AGM expenses	1,200,000.00	√	√	√	√	√
3.	Planning, review and reflection meeting expenses	750,000.00	√	√	√	√	√
4.	Journal Purchasing	500,000.00	√	√	√	√	√
5.	Software Consumable	300,000.00	√	√	√	√	√
6.	Laptops for Teaching staffs	1,050,000.00	√	√	√	√	√
7.	Computers for Lab	1,200,000.00	√	√	√	√	√
8.	Educational/learning Materials	800,000.00	√	√	√	√	√
9.	Development of Lab & Equipment	3,000,000.00			√	√	√
10.	Multimedia-Projectors, smart board Procurement	800,000.00	√	√	√	√	√
11.	Academic Tour for Teachers	1,000,000.00	√	√	√	√	√
12.	Observation Tour for BOD body	750,000.00	√	√	√	√	√
13.	Field Study Trips for Students	1,000,000.00	√	√	√	√	√
14.	Scholarship	3,500,000.00	√	√	√	√	√
15.	Professional Trainings for Students	500,000.00	√	√	√	√	√
16.	Research training and orientations for Students	1,000,000.00	√	√	√	√	√
17.	Research trainings for teachers	1,000,000.00	√	√	√	√	√
18.	Mini Research Scheme for Teachers	1,000,000.00	√	√	√	√	√
19.	Social Research Conduction	500,000.00	√	√	√	√	√

S. N.	Activities	Expenditure	Work in the years				
			I	II	III	IV	V
20.	National Level Seminar Conduction	1,000,000.00			√		
21.	Paper Presentation in Conference	400,000.00		√	√	√	√
22.	Cooperation with Foreign Higher Education Institutions (Exchange Prog.)	400,000.00			√	√	√
23.	Publication of Research Works	550,000.00	√	√	√	√	√
24.	Publication of Students' & Teachers' Creations	500,000.00	√	√	√	√	√
25.	EMIS Strengthening, Operation and Publication	750,000.00	√	√	√	√	√
26.	Students' Job Counseling and Placement Unit's (HRD) Expenditure	250,000.00	√	√	√	√	√
27.	Orientation programs & bridge course programs for students	600,000.00			√	√	√
28.	Cells operation & up-gradation Budget	800,000.00	√		√		√
29.	Visiting Professor Allowance	400,000.00	√	√	√	√	√
30.	Health Centre operation	100,000.00	√	√	√	√	√
31.	Conduction of Workshops	500,000.00	√	√	√	√	√
32.	IQAC Strengthening Cost	1,000,000.00	√	√	√	√	√
33.	Tracer Study Cost	300,000.00	√	√	√	√	√
34.	Extension Activities	500,000.00	√	√	√	√	√
35.	Blood Donation Program Conduction	150,000.00	√	√	√	√	√
36.	Development and Implementation of Additional Focused Academic Programs (Electives)	1,500,000.00		√	√	√	√
37.	Conduction of Health Camp	350,000.00	√	√	√	√	√
38.	Conduction of Extra Classes for Students	500,000.00	√	√	√	√	√
39.	Conduction of Project works for Students	500,000.00	√	√	√	√	√
40.	Conduction of Social Awareness Program by Campus for Community	400,000.00	√	√	√	√	√
41.	Professional Training for Non-Teaching Staff	200,000.00	√	√	√	√	√
42.	Professional Training for Teachers	1,000,000.00	√	√	√	√	√
43.	Further Study Aid for Teachers	3,000,000.00		√		√	√
44.	Management & Repair of Campus Surrounding (Playground & Compound Area)	2,000,000.00	√	√	√	√	√
45.	Implementation of CCTV Observation System	500,000.00		√			√
46.	Implementation of Intercom System	100,000.00	√			√	
47.	Grants for Outstanding & Competitive Students who Win the Competition in district, regional, national Level	250,000.00	√	√	√	√	√
48.	Publication of Campus Prospectus	500,000.00	√	√	√	√	√
49.	Uniforms for staff	600,000.00	√		√		√

S. N.	Activities	Expenditure	Work in the years				
			I	II	III	IV	V
50.	Store management	250,000.00	√	√	√	√	√
51.	Maintenance of electricity	600,000.00	√	√	√	√	√
TOTAL SUM		41,900,000.00					

Resource Mobilization (BUDGET/ ACTION PLAN):

S. N.	Activities	Expenditure	Work in the years				
			I	II	III	IV	V
1.	Computer Lab Block extension	2,000,000.00		√		√	
2.	Expansion of classroom building (construction)	15,000,000.00	√	√	√	√	√
3.	Construction of Hostel	15,000,000.00			√	√	√
4.	Construction of Campus Administrative Building	7,500,000.00	√	√			
5.	Construction of department Library and Furnishing	1,500,000.00	√	√	√	√	√
6.	Vehicle purchase (For student)	3,500,000.00			√		
7.	Construction of campus boundary	20,000,000.00		√	√	√	
8.	Drinking water tank	600,000.00		√			
9.	Ladies friendly washroom	1,000,000.00		√	√	√	
10.	Generator purchasing	1,000,000.00			√		
TOTAL SUM		67,100,000.00					

NARRATIONS (Performance Grants):

1. Books Purchasing:

YDMC has a plan to have sufficient books in library according to the subjects of the faculty. The books will be purchased during all five years as per requirement. The campus has a hope that every student will have an easy access to the supportive books.

2. AGM expenses:

YDMC has to conduct AGM annually in which the campus prepares the plan for upcoming period, reviews the previous implemented plans, and celebrates success and shares learning of past year. During annual review meeting faculty members, students, staffs are felicitated on the basis of their performance and contribution and educational attainment.

3. Planning, review and reflection meeting expenses:

To implement the program successfully in the campus, the campus has to conduct monthly planning meeting, quarterly review meeting and periodic reflection program. By the help of such events, the campus will achieve successful implementation of targeted programs.

4. Journal Purchasing: The campus has a plan to purchase various journals to enhance the students' learning during five years. The collection of journals from national and international sectors will be the supportive source to develop the students' overall performance.

5. Software Consumable:

YDMC is planning to run every office work with the help of software in all department. The library section, account section and other possible activities will be conducted using related software respectively to run the campus smoothly.

6. Laptops for Teaching Staff:

Realizing the effectiveness of modern technology in teaching and learning activities, the college is planning to encourage the teachers to teach using multimedia. From the second year of this planning, the college has a plan to provide some laptops to the interested faculty members.

7. Computers for Lab:

The campus has a computer lab for the purpose of the students and teachers. Though we do have planning to utilize the maximum in teaching and learning activities.

8. Development of Educational Materials: YDMC has a plan to purchase the necessary education materials to enhance the teaching learning activities as per the spirit of the QAA.

9. Development of Lab & Equipment: Since campus is working to launch technical programs, it needs to develop lab and its equipment.

10. Multimedia Projectors Procurement:

The campus has a plan to replace the traditional way of teaching and learning activities with modern technologies to strengthen students' overall performance. On the basis of procurement plan, the campus is planning to purchase some multimedia projectors.

11. Academic Tour for Teachers: Realizing the importance of academic tour to improve the quality of teaching and learning of faculty members and non-teaching staffs, the college is planning to organize academic tours to different institutions in different years.
12. Observation Tour for BOD body: It is believed that the institution will work efficiently if the Board of Director bring updated policies. For this reason, the campus has a plan to organize different observational tour of some educational institutions by representatives of the Board of Director body.
13. Field Study Trips for Students: For the overall development of the campus, the campus has been continuously running the programme of field study trips for the students. However, the campus has more plans to increase such types of trips based on the field study regarding their courses.
14. Scholarship: Scholarship programme is always praiseworthy in every campus for the keen interested students as it supports them to continue their study despite the financial problem. Our campus has been able to provide the scholarship to 10% of the total students. Moreover, the campus has the plan to increase the scholarship percentage with additional amount.
15. Professional Trainings for Students: It is very compulsory for the students to be professionally developed. To strengthen students' professional quality, the campus has a plan to organize some profession development trainings every year.
16. Research Trainings and Orientations for Students: Research training and orientation programmes are necessary for today's students. Realizing the importance of the training, the campus has a plan to organize such types of training and orientation programme every year to boost up their professional skill and knowledge.
17. Research Trainings for Teachers: The campus has planned to provide research trainings for faculty members regularly in order to enhance their skill. So, that their skill will be beneficiary themselves, for the institution and society as well.
18. Mini Research Scheme for Teachers: To prepare the teachers for writing academic research, the campus is planning to facilitate the teachers with the facility of mini research. This will empower their teaching and learning skill and they will be motivated for further study.

19. Social Research Conduction: Social factor is very much interconnect with the academic performance of the campus. Social research enables us to introduce different academic planning to bring effect result of the campus. So, keeping the importance of social research in mind, the campus has a plan to conduct social research programme every year.
20. National Level Seminar Conduction: YDMC clearly knows the value of seminar which enable the institution to grab the concrete ideas putting effectively for the further growth of the campus. The campus has a plan to organize a national level seminar on third of the strategic plan.
21. Paper Presentation in Conference: YDMC has a plan to make the faculty members to present paper in different conferences which will enable them to impart effective teaching learning activities. This will continue throughout the action plan.
22. Cooperation with Foreign Higher Education Institutions (Exchange Program): frequent visit of foreign higher delegate helps to develop mutual understanding and sharing of ideas. The campus has a plan to start cooperation with foreign higher educational institution from the third year of strategic plan.
23. Publication of Research Works: The campus has a plan to publish different research works every year throughout the strategic plan. This work encourages the faculty members and the students to do more research.
24. Publication of Students' & Teachers' Creations: The campus has planned to publish the creations of teachers and students yearly in order make them innovative and creative.
25. EMIS Strengthening, Operation and Publication: For the transparent and smooth information of the campus, EMIS team has already been formed. The campus is planning to strengthen the EMIS team and periodic publication of EMIS report.
26. Students' Job Counseling and Placement Unit's (HRD) Expenditure: Job counseling is very much important as most of the subjects are designed for job placement of the students. That is why it is compulsory for every campus to develop the unit under human development forum. YDMC has the programme related to job counseling and placement of the students throughout the strategic plan.

27. Orientation Programs & Bridge Course Programs for Students: Bridge course and orientation programme are very closely related to bachelor courses, many advanced and newly introduced courses. Therefore, the campus has also planned to run orientation and bridge course programme finally making the students to cope up with the introduced courses.

28. Cell operation & Up-gradation Budget:

YDMC has already formed different cells to run QAA programme smoothly. The campus has planned to allocate some budget to each cell to conduct the programmes within the cells.

29. Visiting Professor Allowance: To develop the competence and performance of the faculty members and students with the new ideas and information, the campus is planning to invite some reputed professors for informative classes in campus during the strategic plan years.

30. Establishment of Health Centre: The students in campus sometimes have health problems and there can be some accidental cases. Regarding the first aid treatment and basic relief, the campus is planning to set up a health center in campus.

31. Conduction of workshops: The campus has made a plan to conduct various workshops in order to meet the global quality and for the continuation of better quality in overall aspects. The workshops will be conducted in periodical basis which will be beneficial for QAA process.

32. QAA Cost: YDMC aims to achieve QAA as soon as possible. For this, the college has already started its steps on QAA process and made different committees. The college has planned to use above mentioned amount according to the need of the programmes.

33. Tracer Study Cost: The campus is planning to start trace the passed-out graduate and keep their records in campus. This will be done in accordance to the rules and regulation of UGC.

34. Extension Activities: YDMC campus is a community based campus. It is an effort of various stakeholders and they are closely related to the campus. The campus with its stakeholders is planning to organize various extension activities which can enhance its quality and overall performance as well.

35. Blood Donation Program Conduction: YDMC, being a community based campus, is directly connected to the social responsibility. It is planning to organize blood donation programme every year as mention in the strategic plan.
36. Development and Implementation of Additional Focused Academic Programs (Electives): The campus education system has to be updated with the latest subject demanded in the society. To cope up with such demand, the campus has a plan to develop and implement of additional focused academic elective programme.
37. Conduction of Health Camp: The campus is also responsible for the society. It wants the college and the community with sound body and health. Therefore, the campus is planning to organize a health camp every year as mentioned in the strategic plan.
38. Conduction of Extra Classes for Students: The students in YDMC are of different intelligence. Some students are very good at study and some are weak. The college has a plan to conduct extra classes for the needy students so that they can improve their study. The extra classes will be conducted on the basis of campus rules and regulations.
39. Conduction of Project Works for Students: Some courses are related to the project works which enable the students practically. Therefore, the campus has planned to conduct project work in teaching and learning activities. Every project work will be conducted every year.
40. Conduction of Social Awareness Program by Campus for Community: The campus is the community based campus in which the community is directly interrelated. When the community is aware, there will be a supportive environment for the campus. Therefore, the campus has planned to conduct social awareness programme being based on the strategic plan of the campus.
41. Professional Training for Non-Teaching Staff: The campus has realized the value of non-teaching staffs because the activities of the campus are solely dependent upon the help of non-teaching staffs. Therefore, the campus has planned to provide some professional training every year to develop their capacity and performance.

42. Professional Training for Teachers: The development of institution is directly related to the teachers. The teachers must have better knowledge about their course for the better outcome. Therefore, the campus has planned to organize professional trainings for the teachers in need.
43. Further Study Aid for Faculty members: It is a matter of proud to be highly qualified teachers in an institution. If the teachers are dynamic and highly qualified, the campus will be flourished. Considering the fact that the campus has planned to provide the teachers further study support for M.Phil. and Ph.D. which will be applied based on the strategic plan.
44. Management & Repair of Campus Surrounding (Playground & Compound Area): YDMC has been able to manage a big playground but not good enough. The campus needs a good parking, playground, garden and good surrounding to be managed as soon as possible. Now, the campus has a plan to manage and repair the surrounding.
45. Implementation of CCTV Observation System: To maintain discipline and to improve the quality, the campus has CCTV observation system to have proper monitoring and observation of its overall activities.
46. Implementation of Intercom System: To run the institution smoothly, there must be faster communication among the officials and staffs. There must be faster and easier connection among the administrators, faculty members, students and other stakeholders. Therefore, the campus has planned to implement the intercom system of telephone for easy access in the campus.
47. Grants for Outstanding & Competitive: YDMC has planned to provide special grants to the outstanding and competitive students who win the competition in district, regional and national level which will encourage and motivate the students to perform better.
48. Publication of Campus Prospectus: The campus has been publishing campus prospectus annually. Besides this, the campus has planned to publish campus prospectus annually including mission, vision, goal, new strategies and detail information of the campus.
49. Uniforms for Non-Teaching Staffs: Uniform is also one code of conduct in any institution. The campus has also set a plan regarding uniform. However, due to the financial burden, it has been made compulsory for non-teaching staffs.

50. Store-Room Management: The store management is also a part of infrastructures needed to store both useable and non-useable resources. So, the campus is highly determined to manage the store-room properly.
51. Maintenance of Solar System: The campus has already installed a solar system to meet the demand of electricity during the load-shedding period. As the installed system is not functioning properly, the campus has set a plan to maintain the present solar system.

NARRATIONS (Resource Mobilization):

1. Operation of Computer Lab: Computer lab is very much important in context to the present demand of the modern world. That is why, the campus has especially allocated budget for the construction
2. Expansion of classroom building (construction): As per the inclusion of different subjects in every faculty, the need for the demand of extra classroom building is so demanding that the campus is highly determined to expand the classroom building.
3. Construction of hostel: The campus has the number of students migrating from neighboring districts. The catchment area of the campus is increasing day by day. To meet the demand of the students from neighboring districts, the campus is highly concerned on constructing the well facilitated hostel.
4. Construction of campus administrative building:

Administration is the core part of the institution to run it effectively and efficiently. So the campus has constructed campus administrative building to work independently initiating its policies.

Construction of library building and furnishing:

Library is the basic need for the students seeking to consult different texts and reference books along with journals. The present library of the campus is not sufficient to meet the demand of the growing students trying to consult updated references. So, the campus has a plan to construct wide spaced and well equipped library with latest technology.

5. Vehicle purchase (for students):

The students studying in this campus are from remote areas of neighbouring VDCs having a long distance. It is the present need of the campus to buy a vehicle to cater with the students' demand. Therefore, the campus has set a plan to buy vehicles for campus.

6. Construction of campus boundary:

The campus property is solely based on the safety which can be achieved through the proper boundary of the campus premises. Realizing the importance of the boundary, the campus has a strong plan to construct a boundary for safety and privacy.

7. Drinking water tank:

Water is a very basic element of a sound and healthy institution. Although the campus has some hand pumps for drinking water, the campus has planned to set up some water tanks in campus premises.

8. Ladies friendly washroom:

The campus has more females in proportion to males. That is why, it has very urgent demand to build a ladies friendly washroom to address their problem that occur naturally. On the other hand, such toilet will automatically promote the ladies to be regular finally leading positive academic result.

9. Generator purchasing:

As mentioned earlier, the maintenance of the solar system is only meeting demand in low average. That is why, the purchasing of generator is highly effective to meet the demand. So, the campus has made the plan in the strategic plan.

5.4. PROGRAMS

YDMC has its different programmes associated with the strategic plan of the campus to make the institution highly recognized in the catchment area. Furthermore, the plans have been based on the upliftment of the campus along with meeting the demand of the students from different localities adjoining different RMs.

The programmes of the campus are totally based on research methodology, developing co-curricular activities as per the TU curriculum. It also plans to have training programmes and implementation of master degree programme along with B.B.A., B.H.M., B.B.M., B.H.M., B.P.H., and B.S.W.

5.5. PRIORITIES

According to the aforementioned strategic planning, the campus has given priorities on the development of academic, technical, social and physical qualities. The campus will conduct related activities based on the priorities with financial support of the grants.

5.6. IMPLEMENTATION OF PLAN

The implementation of the plan will be based on the rules, regulations, recommendation of TU, UGC and as per the decision of the board of the director. Different sub-committees including stakeholders will be mobilized to motivate and attract for the implementation the plan.

5.7. PROVISIONS for MONITORING & EVALUATION

YDMC is a transparent public campus on all the activities. The implementation of strategic plan will be monitored by internal body of campus as well as open to monitor by external body or donor. The campus has already formed different committees and sub-committees to monitor and evaluate all the actions and plans.

5.8. ASSUMPTIONS / LIMITATIONS

YDMC hopes that all the stakeholders, related institutions, agencies, different committees and sub-committee would work jointly and efficiently to achieve the goals of the campus. The strategic plan of the campus will be successful.

All the plans and activities will depend upon the campus policies, TU policy grants, stability of the government and national educational policies.

SECTION 6: RESOURCE MOBILIZATION – STAKEHOLDER’S CONCERNS & COMMITMENTS

6.1. STAKE HOLDERS’ FORUM

YDMC is able to continue the general assembly of the campus every year. General assembly of the campus is the forum of college lifetime members. Likewise, the campus consists of an alumni association named 'Yagyodaya Ex-student Forum' and free student Union. The college is going to form a parent association in accordance to the present amendment. Different political parties, VDC and DDC have been working as the external stakeholders.

6.2. COMMITMENTS & CONCERNS

YDMC is always ready to implement different programmes related to updated qualitative, and production oriented education especially focusing female educational development. Campus is coordinating with society and local agencies (Municipalities, VDCs & DDC) and other stakeholders as mentioned earlier.

The campus being a non-profit organization pays concerns on social welfare activities along with eradicating rural problems. Furthermore, it pays interest upon highly qualified teaching staff, updated administrative staffs and sound performance on result.

6.3. NETWORKING

Campus is connected internally with life time members, College Board of Director (BOD), UGC authorities, donors, local entrepreneurs, and social activists, and externally with Nepal Public Campus Association and TU. Campus teachers are connected with Public Campus Teachers Association along with Ex-Student through Alumni Association and Free Student Union.

6.4. SCHEME FOR RESOURCE MOBILIZATION

YDMC is keen interested for holistic development through different factors. Holistic development refers to the development of academic as well as physical and social infrastructures of the campus. That is why the campus is highly committed to the implementation of the scheme by using use of resource mobilization grants and performance grants under the provision of TU and UGC.

Annexes

- Budget Of Current Fiscal Year 2077/078
- Land Ownership Document
- Campus Rules and Regulations
- Master Plan of Campus